

TRED-eXTRA[®]

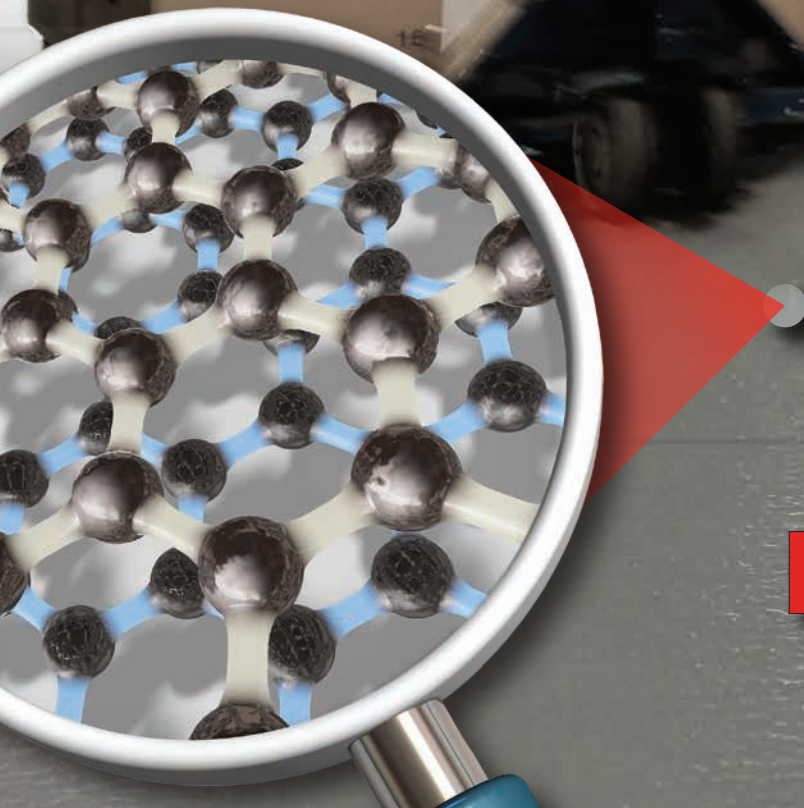
MEZZANINE DECKING

DURABILITY MATTERS

3,000 lbs Pallet Jack Capacity

Proven Wheel & Wear Resistance

Highly Scratch Resistant



NANOTeX[®]



TRED-eXtra® Features

- 3/4", 1-1/8" x 4' x 8'
T&G 2 long edges (standard panel size)
- Available sizes up to 5' x 12'
(Cut-to-size & custom machining available)
- Installs easily over corrugated roof deck to provide a long-lasting and durable floor
- 1/16" self-spacing expansion gap – 50% smaller than industry competition, no spacers required
- Low linear expansion – less susceptible to temperature and humidity changes than other industry panels
- Extremely low static conductivity
- Class C flame spread rating

Pallet Jack Load



*Wheel loads have been determined using 3/4" substrate, independent laboratory tests and extensive field work. The wheel load refers to the front tine of the pallet jack. The rating includes the weight of the pallet jack.

Environmentally Sustainable

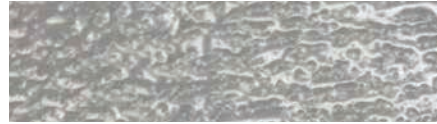
- Made with 100% recycled or recovered wood fiber
- LEED® Credits are available
- EPP CPA Certified
(Environmentally Preferred Product)
CCR 93120.2 Certified (CARB Phase II)

Ideal Applications

- Rack Supported Mezzanines
- Free-Standing Mezzanines
- Pick Modules
- LEED® Projects
- Catwalks
- Work Platforms
- Shelving

Finishes

NANOTeX® Gray is the premier choice for tough material handling applications. **NANOTeX** utilizes Nanotechnology to create the toughest and most durable finish available. Independent testing shows that **NANOTeX** has exceptional wear resistance and is highly scratch resistant.



NANOTeX

- No Additional Static Protection Required
- Superior Stain Resistance
- Engineered for Wheel Loads

NANOTeX Gray ESD— Electrostatic Dissipative finish for static sensitive areas and equipment. Each order is individually tested to ensure it meets all Electrostatic Discharge Association and ANSI standards.

Titanium CLEAR SR— Exceptional scratch & abrasion resistance in a clear finish that is easy to clean.

Unfinished— TRED-eXtra® is available as an unfinished panel, for cost savings without sacrificing panel capacity. The only unfinished panel available with a 3,000 pound pallet jack rating.

Substrate

TRED-eXtra is a moisture resistant high-density engineered panel manufactured using a complex blend of wood fibers and resin. Modern three layer technology is used to give TRED-eXtra exceptional physical and mechanical properties with the ability to handle extraordinarily heavy wheel load traffic. It is important to engineer the corrugated metal substructure to carry the intended floor load.

Fastening Systems

TRED-eXtra can be fastened two ways— from the top, or underneath the corrugated. For topside fastening, we offer self-tapping, self-countersinking TRED-eX Tek Screws with color matched heads. Screws are offered in collated strips for use in stand up screw guns, or loose for handheld installation. Please contact Affiliated Resources, Inc. for inquiries about underside fastening.

Warranty

TRED-eXtra is warranted to be free of any and all manufacturing defects for the life of the panel. Affiliated Resources, Inc. will not be held liable for any incidental or consequential damages, nor any damages that are the result of the misuse or improper installation of TRED-eXtra.



AFFILIATED RESOURCES, INC.
TWENTY YEARS PROVIDING SOLUTIONS

503.228.3802 | tred-ex.com